



Pupil Premium Impact - Autumn 2018

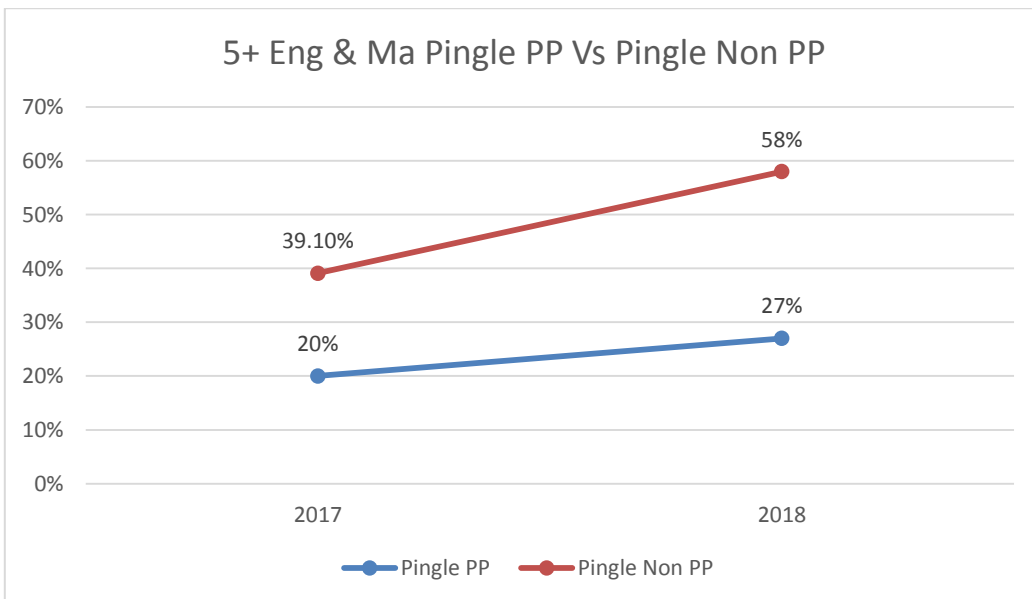
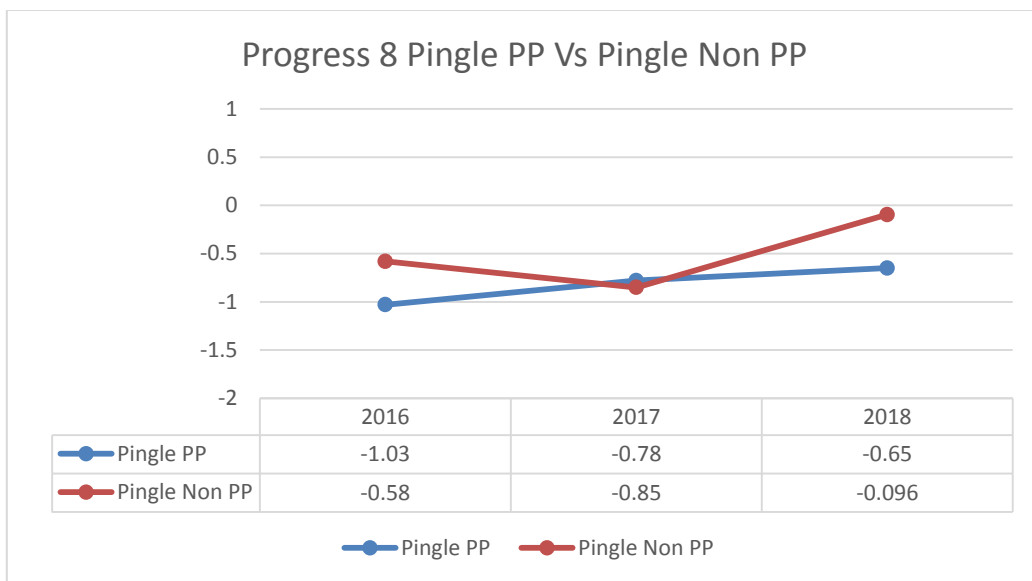
Results

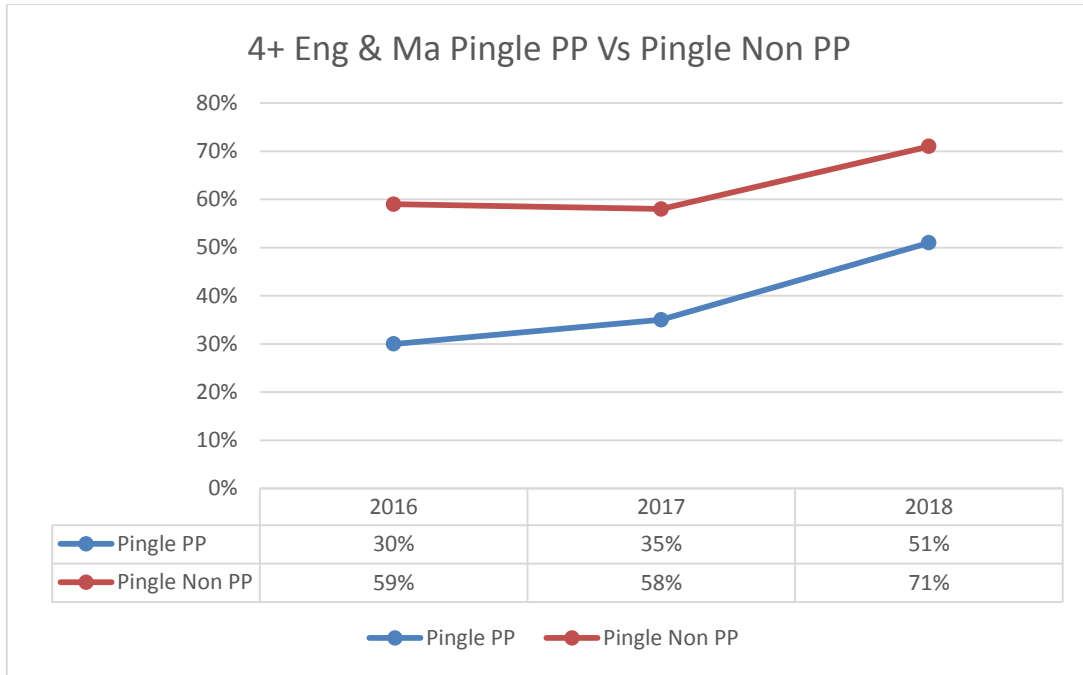
- The graphs below indicate the improvements being made by both pupil premium and non pupil premium students. It is to be noted that whilst gaps are not necessarily closing this needs to be understood in the context that ALL students have significantly improved outcomes when compared to 2017.
- PP students in year 11 in 2018 have performed in line with students nationally at grade 4+ basics and above that which found nationally for grade 5+ basics.
- Interventions and areas identified where PP funding has been spent have contributed in a variety of ways to these improved outcomes.
- The ongoing systems that are in place to remove barriers to learning, in and out of lesson interventions and also assist financially where appropriate has had a collective effect and is much more effective than any individual, short term out of lesson academic support.

	2016					
	National			Pingle		
	PP	Non PP	Gap	PP	Non PP	Gap
Cohort	NA	NA		50	118	
4+ Basics EM		71%		30%	59.30%	29.30%
5+ Basics EM	NA					
A8		53.3		32.4	44.95	12.55
P8		0.1		-1.03	-0.58	0.45

	2017					
	National			Pingle		
	PP	Non PP	Gap	PP	Non PP	Gap
Cohort	NA	NA		40 (37)	133	
4+ Basics EM		71%		35%	57.90%	22.90%
5+ Basics EM		49.40%		20%	39.10%	19.10%
A8		49.8		30.1	39.6	9.5
P8		0.11		-0.78	-0.85	-0.07

	2018					
	National			Pingle		
	PP	Non PP	Gap	PP	Non PP	Gap
Cohort	NA	NA		59	102	
4+ Basics EM	46.70%	71.30%	24.60%	45.00%	72.00%	27.00%
5+ Basics EM	26%	49%	23%	27%	58.00%	30.88%
A8	38.54	49.89	11.35	33.76	42.8	9.04
P8	-0.389	0.119	0.508	-0.65	-0.096	0.554

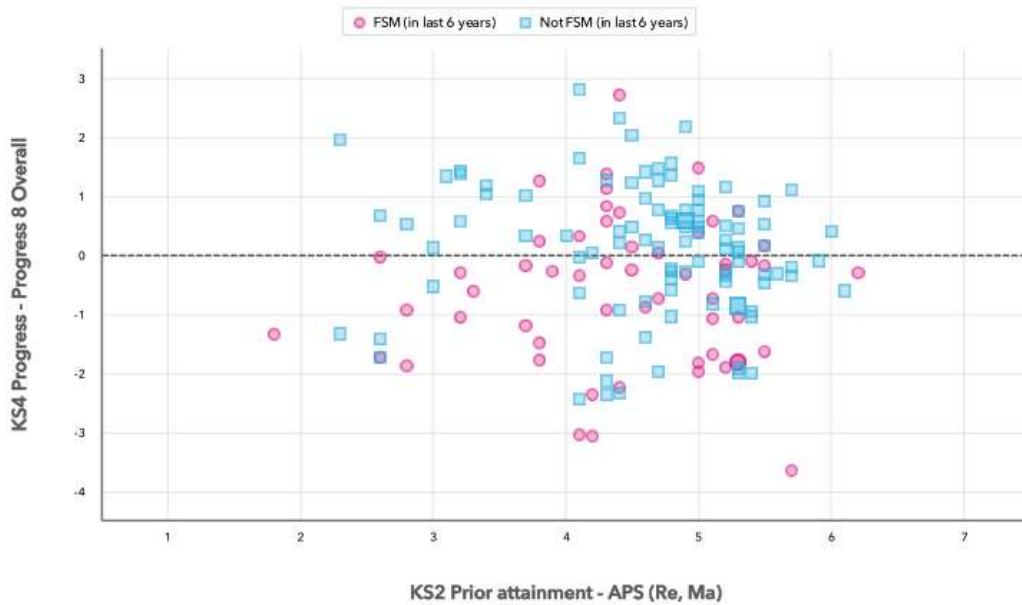




The graph below indicates the overall progress made of every student in 2017-18.

Scatterplot

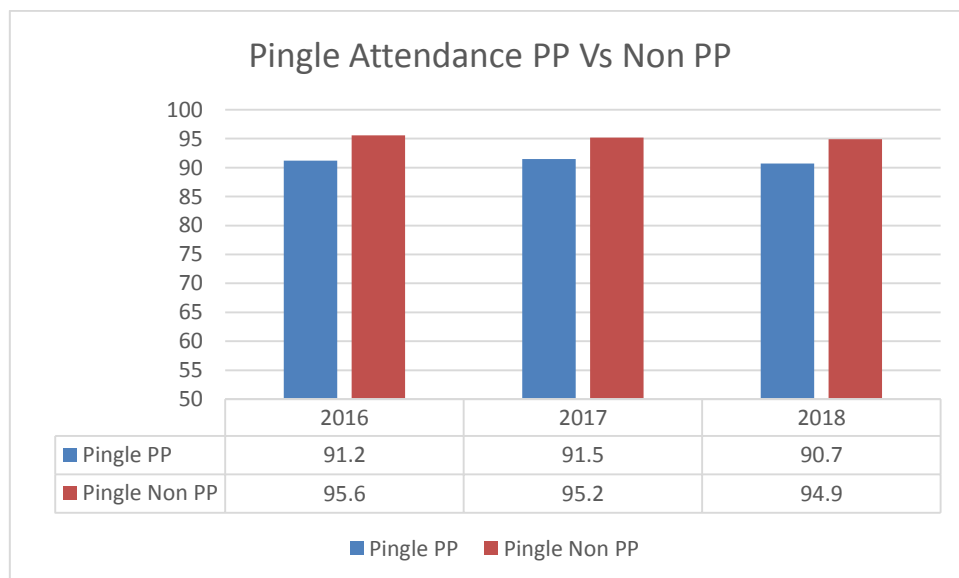
KS4 Pupil scatterplot 2018 161 pupils highlighted by Pupil Premium

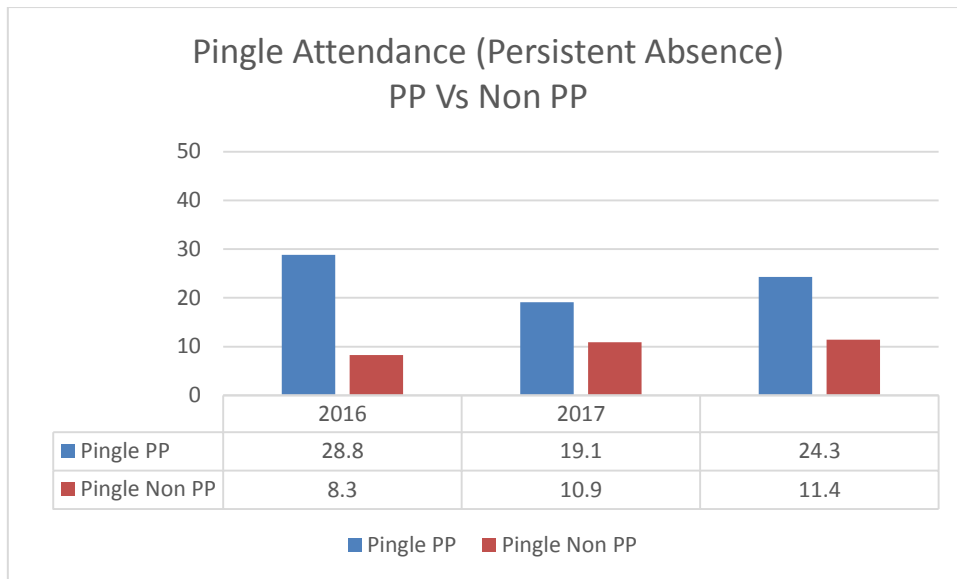


Attendance

- Attendance overall has remained in line with 2017 key measures. There is still a gap between PP and non PP students, which has remained constant in the last 12 months.
- Attendance throughout all years of the Academy has decreased by 1% to 93% as a result of a large bout of illness beginning in late December and continuing through to early 2018 which had an usually large number of absences and many instances of poor health observed within school resulting in a deep clean. This has had an impact on all other attendance figures for the year.
- The graphs indicate a very consistent level of attendance over a 3 year period and a slight increase in PP persistent absentees which has been identified and with the introduction of early help and a the pending appointment of a trust EWO it is hoped to improve this figure over the next 12 months.

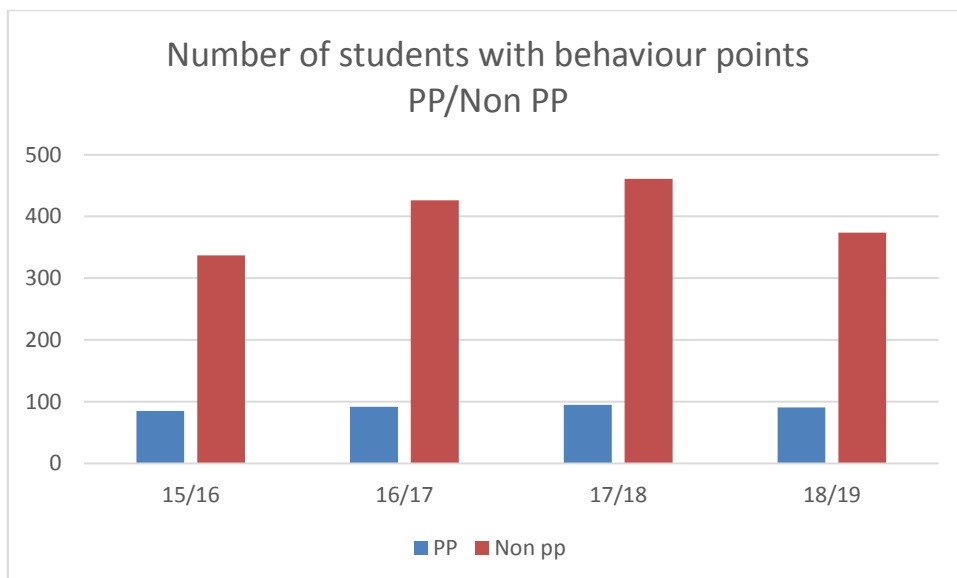
Group	September 2015 to May 2016	September 2016 to May 2017	September 2017 to May 2018
Year 7-11 % Attendance	93.5%	94.1%	93%
FSM students Attendance	88.7%	89.9%	88.1%
PP students Attendance	91.2%	91.5%	90.7%
Non PP students Attendance	95.6%	95.2%	94.7%
Whole school Persistent Absence	15.5%	12%	17%
PP Persistent Absence	28.8%	19.1%	24.3%
Non PP Persistent Absence	8.3%	10.9%	11.4%

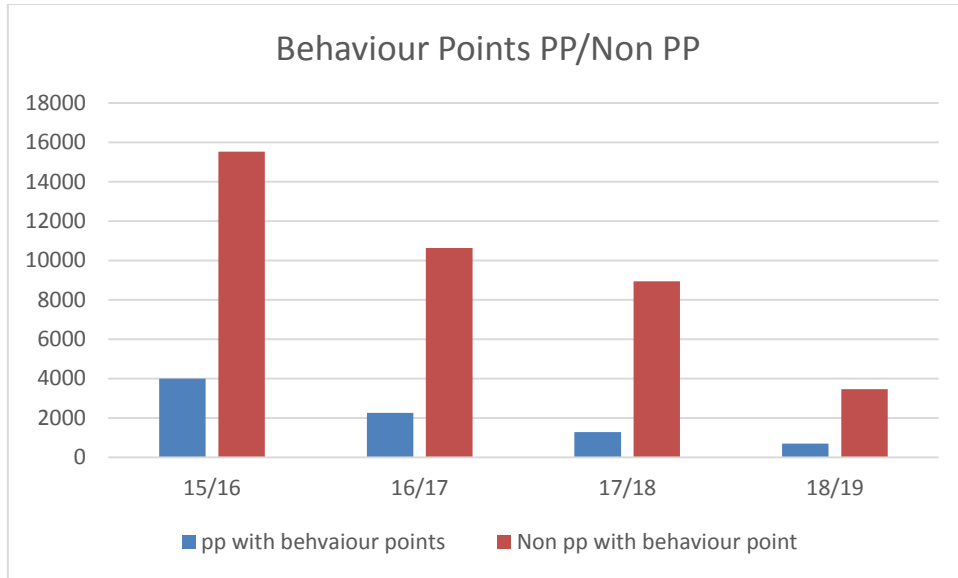




Behaviour

- The number of students with behaviour points has remained steady over a 3 year period with no significant increase or decrease in the number or profile of students receiving behaviour points.
- However, the total amount of behaviour points has significantly reduced over the same period with only 701 behaviour points given to PP students across all year groups over a full academic year.





Exclusions have reduced for PP students and the gap between PP and non-PP exclusions has closed. PP students are still more likely to be excluded than their non PP counterparts.

	2015-2016	2016-2017	2017-2018
No of FT exclusion – PP students	27	22	17
No of FT exclusions – Non PP	28	30	21
% of PP students from all PP	9%	7%	5%
% of Non PP students from all non PP students	4%	3%	2%

